



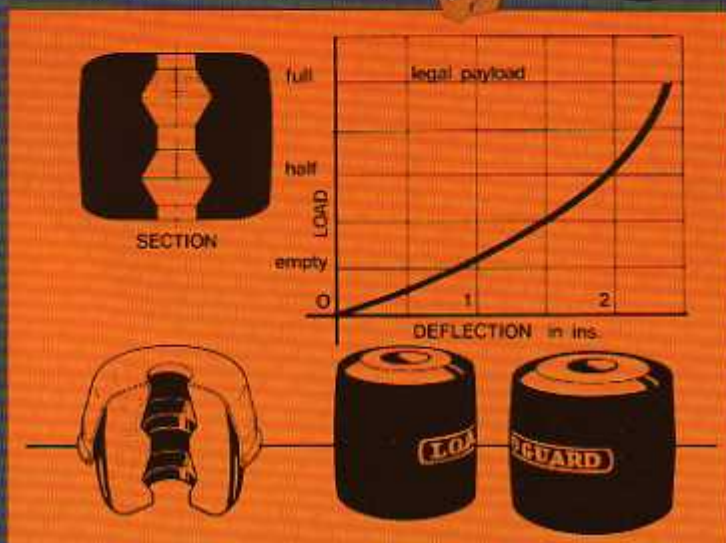
We don't just talk about performance.

We guarantee it!



Chalmers suspensions use variable rate **LOADGUARD*** hollow rubber springs that adjust to load and road conditions giving you a safe, controlled soft ride, laden or empty.

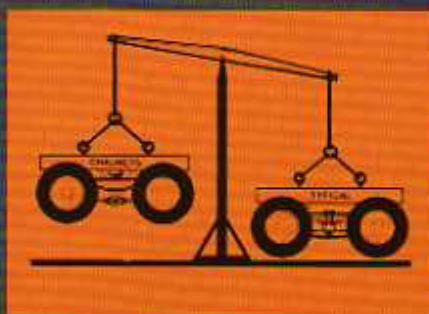
LOADGUARD* self adjusting springs respond immediately, absorbing shocks that range from the smallest road irregularities to the most severe bumps or potholes. Your vehicle is always under cushioned control.



LOADGUARD* RUBBER SPRINGS

are made of high quality rubber, durable in all weather conditions. Self damping, lightweight.

The spun metal "arrestor can" only comes into play when the truck is loaded - the soft rubber spring kisses the inside of the can. The increasing load restricts the LOADGUARD rubber spring, giving greater stability and capacity.



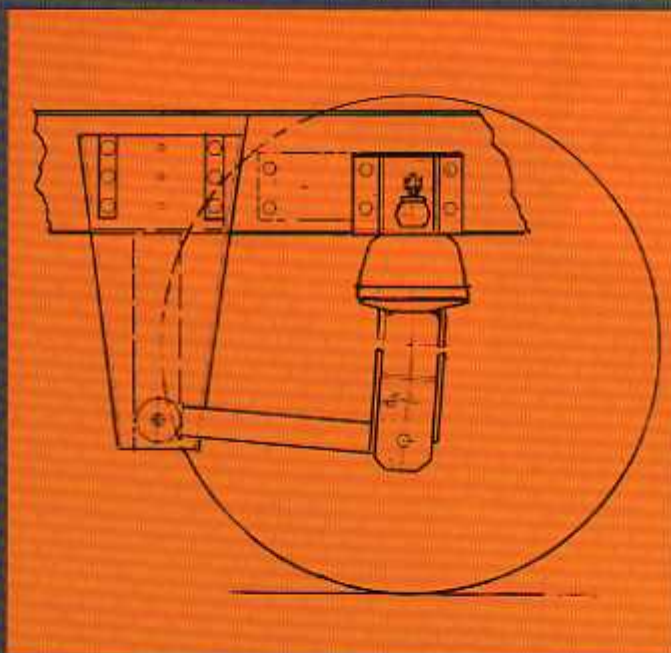
LIGHTWEIGHT

High strength, low alloy steel parts, high tensile steel castings, hollow LOADGUARD rubber springs make Chalmers Suspensions lightweight and extremely strong. Up to 300 lbs. are saved over leaf spring axle suspensions. Up to 700 lbs. saved on truck tandems.



LOW MAINTENANCE

LOADGUARD* hollow rubber springs are almost indestructible - designed to last the life of your vehicle. Cartilage-type rubber bushings are unbonded and replaceable in minutes. The Chalmers suspension requires no lubrication at all. Most parts used on trucks and trailers are interchangeable.



COMPACT SUSPENSION

Chalmers frame brackets do not protrude behind the tire for minimum frame overhang, permitting increased wheel base for greater front axle loadings. Garbage Packer Manufacturers tuck the wheels closer to their rear overhang.

MODEL	CAPACITY	WEIGHT (Lbs.)	AVAILABLE OPTIONS
1023-S/F	15,000 to 23,000 Lb.	450	S/F - Straight Frame Model, also available in
1030-S/F	30,000 Lb.	480	D/F - Drop Frame and T/F - Tapered Frame. Please contact Chalmers for application approval. Shock absorbers standard on all models.

Ideal for Refuse, Fire, Utility, Bus and Specialty Type Vehicles

1136 MATHESON BLVD. E., MISSISSAUGA, ONTARIO, CANADA L4W 2V4
 TELEPHONE: (905) 624-9750 • FAX: (905) 624-9796